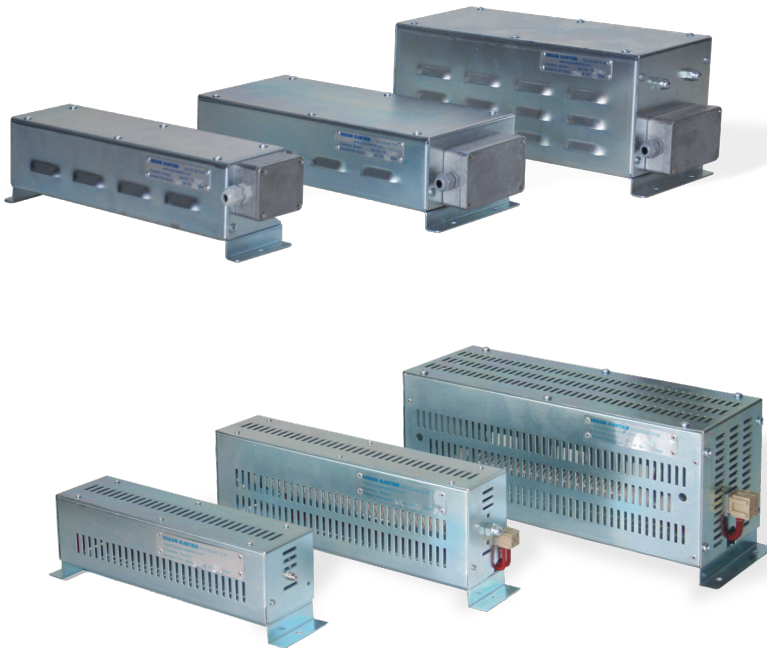


When a motor is driven by a mechanical load in the case of cranes or lifts, it acts as a generator, which converts kinetic energy into electrical energy. If there is no a regenerative system, it creates unwanted and harmful energy for the electrical motor drive system. Braking resistor, which can be connected the drive system, is therefore used to absorb this unsafe energy.



TECHNICAL DATA

Rated Voltage	: 1kV.....10kV
Rated Power	: 50W.....200kW
Rated Resistance	: Customizable
Protection Class	: Acc. to demand Indoor applications : IP20 Outdoor applications : IP23
Cooling	: Natural
Ambient Temperature	: 40°C

